

2017-2018

7.3.1 Describe/Explain the performance of the institution in one areadistinctive to its Vision, Priority, and Thrust.

The college was established in 1979 by SSVV Sangh's, Indi. To provide Higher Education to the youth in this educationally backward area Indi. The President, General Secretary, and all the members of Governing Body of the Parent Association are great visionaries, philanthropists, and educationists who strive restlessly for the upliftment of the disadvantaged rural communities. This college was established with the following broad-based vision and Mission.

Vision

Knowledge alone leads to prosperity and peace

Mission

To provide quality education to the rural learners and to bring out in totality their innate potential for the overall well-being of the society

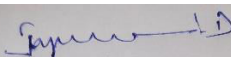
The institution is committed to providing quality education to rural youths at an affordable cost. It constantly strives for the holistic development of students and extends all support to academic progress.

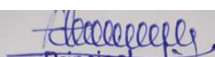
The distinctiveness of our college is effectively reflected in the following points.

- Since the college is situated in a rural area.
- The college has 100 students from rural areas and most of the students are first-generation learners.
- Since most of the students belong to BPL families, their parents cannot get their children educated in urban areas. This is perhaps our distinctiveness.
- We have the appropriate ICT infrastructure like classrooms with LCD projectors, Smart Boards, Computer Lab, Language Lab, and ICT enabled spacious Conference Hall for providing quality education to the rural

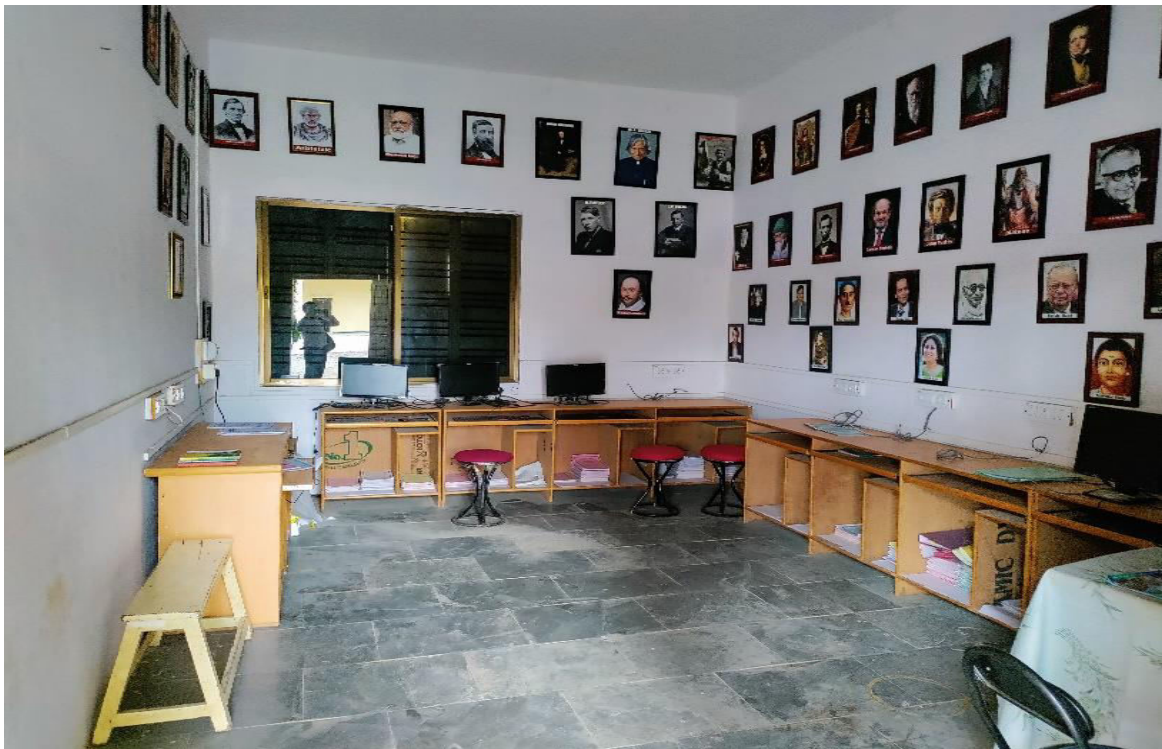
community within their reach.

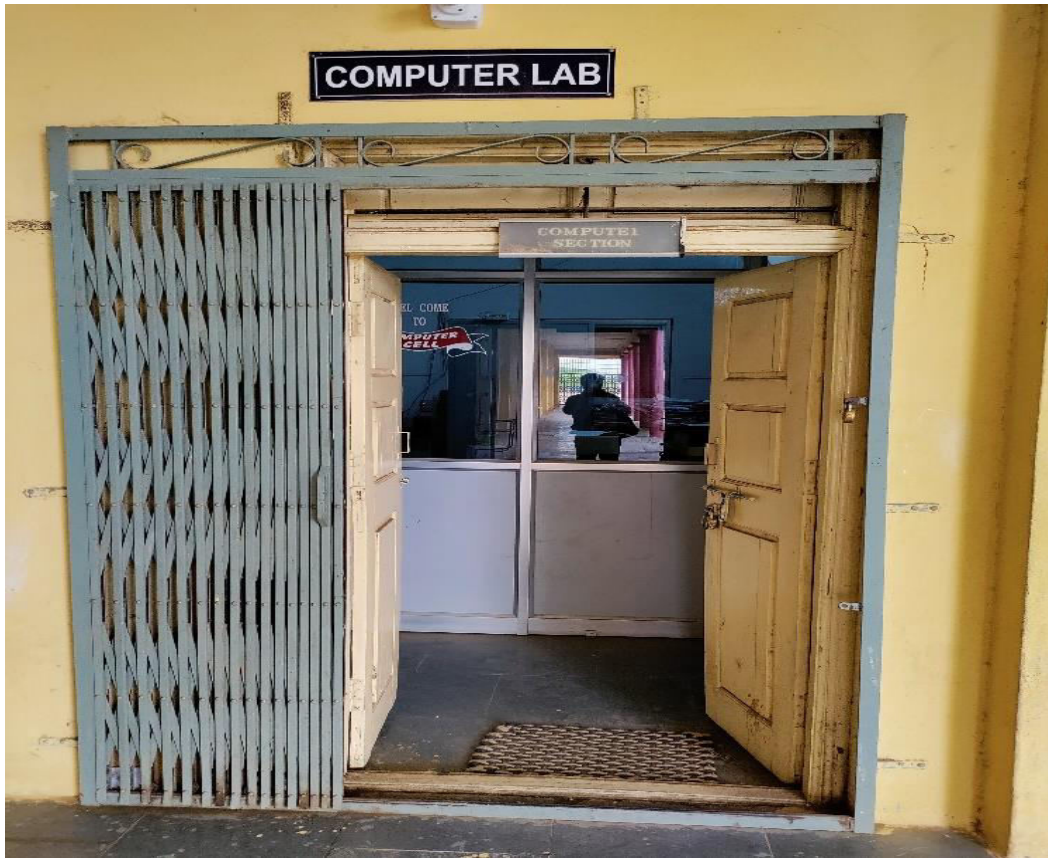
- In addition to this, the institution regularly organizes Special Lectures, Seminars/Workshops on various topics and burning issues so that the rural youth can learn many new things which are beyond the curriculum.
- The N.S.S Cell and Scouts Guides promote societal values and ethics such as compassion, perseverance, tolerance, positive attitude, fraternity, integrity, equality, and temperament for serving others. The acquisition of these societal values ultimately transforms the students into valuable assets to a nation who contribute toward national development.
- The Women Empowerment Cell and Anti-Sexual Harassment Cell aim at sensitizing the students to gender-based concerns and promoting the essence of gender equality to make society more inclusive, tolerant, and ethical.

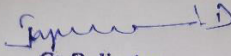

Co-Ordinator
I.Q.A.C.
Shri G.R.Gandhi Arts, Shri Y.A.Patil Commerce
& Shri M.F.Doshi Science Degree College,
INDI-586209, Dist: Vijayapur.

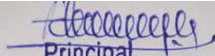

Principal,
Shri G.R.G. Arts, Shri Y.A.P. Commerce
& S.S.Science Degree College,
Indi-586209. Dist: Vijayapur.








Co-Ordinator
I.Q.A.C.
Shri G.R.Gandhi Arts, Shri Y.A.Patil Commerce
& Shri M.F.Doshi Science Degree College,
INDI-586209, Dist. Vijayapur.


Principal,
Shri G.R.G. Arts, Shri Y.A.P. Commerce
& S.S.Science Degree College,
Indi-586209. Dist: Vijayapur.

